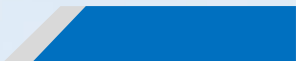
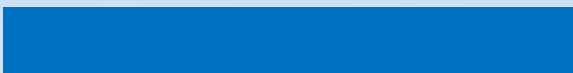


-
-
-







•



- -
 -
- 5~10 kW
 - 5~30 kWh
 -
 -
 -

- - 200 kW PCS
 - UPS
 -
- - LFP 280/314Ah
 - 100kW~2MW
 - 200kWh~4MWh
 - TUV UL

- LFP 280Ah/314Ah
- 20/40
- +
-
-

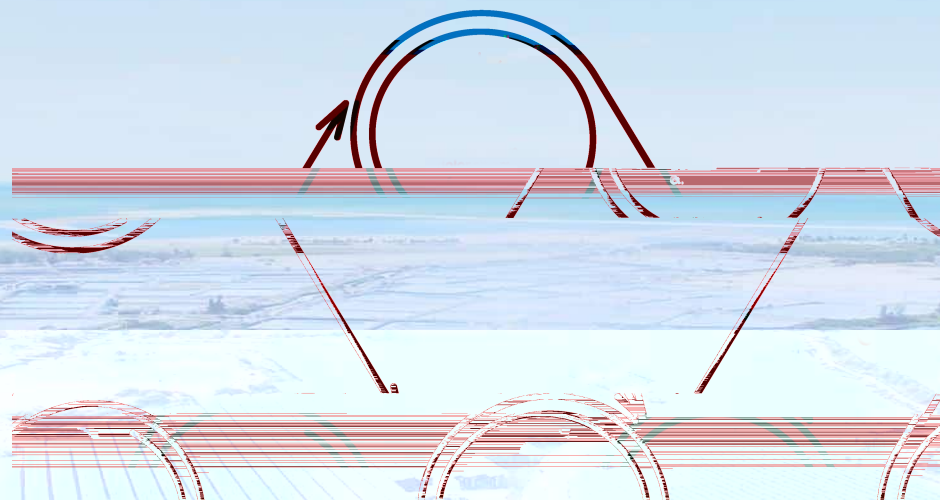
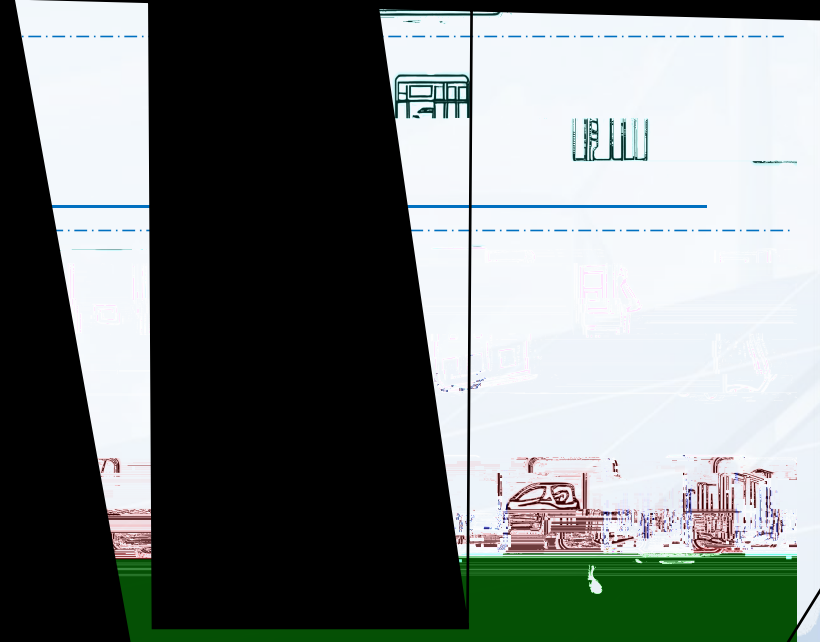
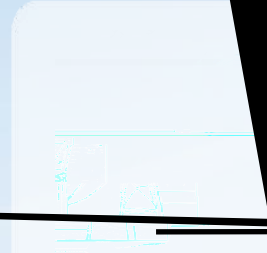
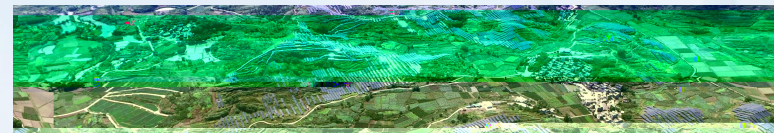


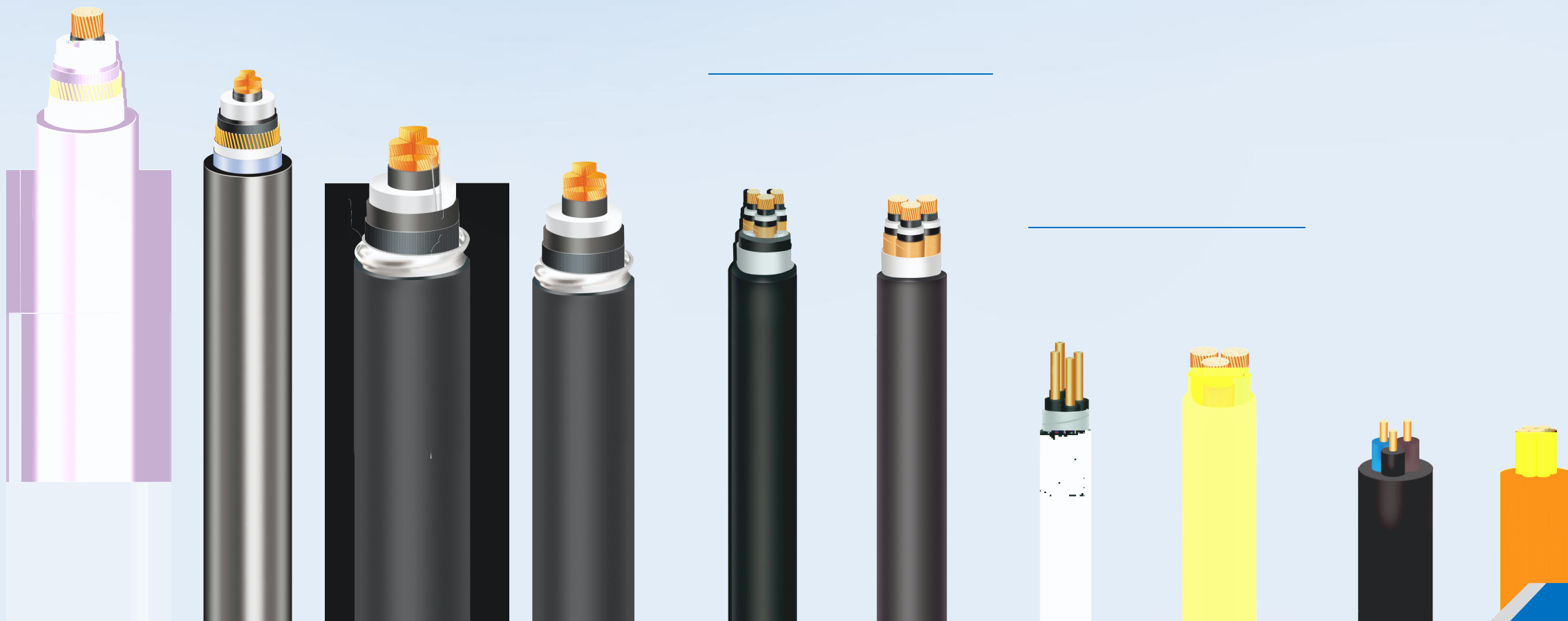
图 1 11 00

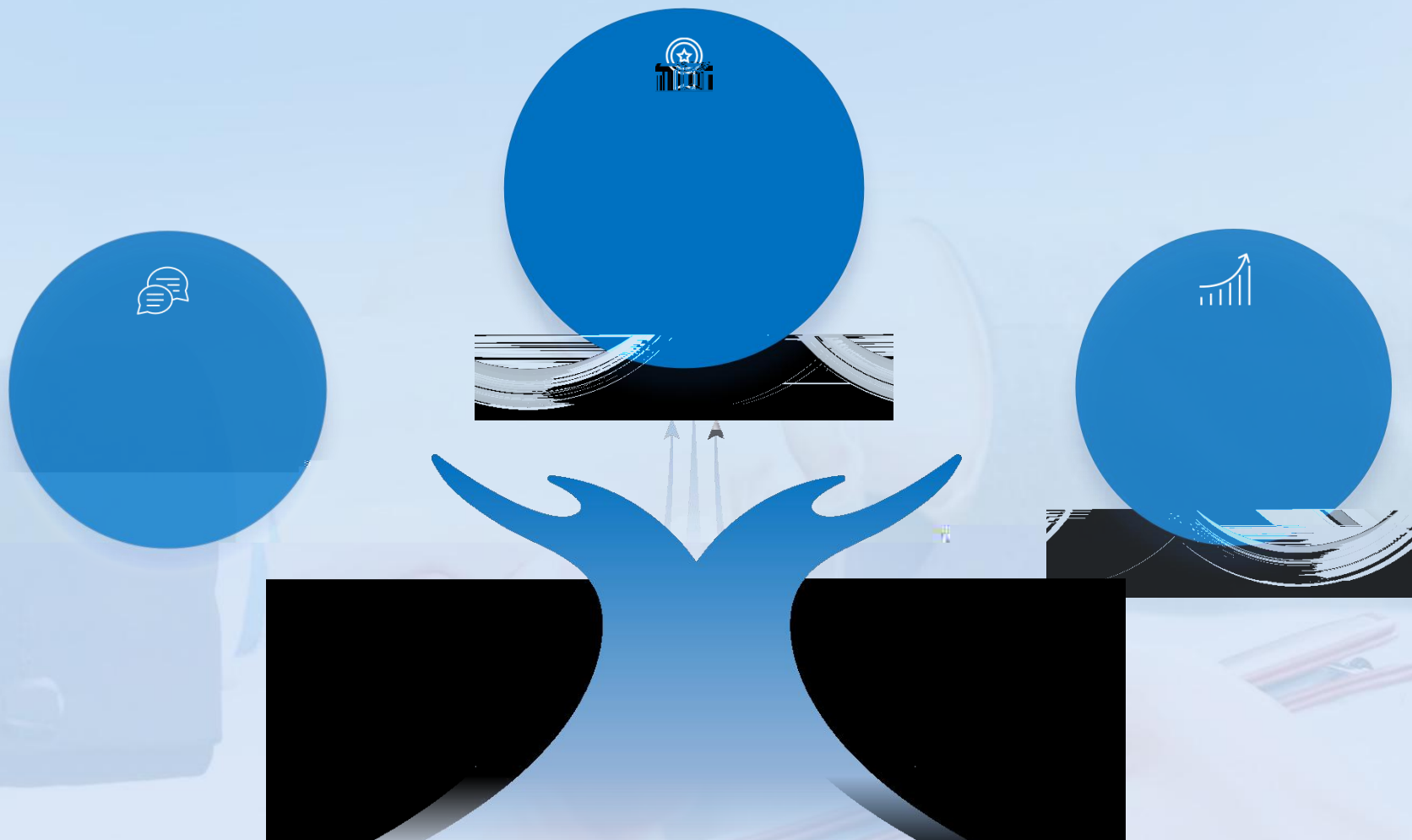














CanSemi
粤芯半导体

TREX
拓尔思



粤财创投
YUECAI VENTURES



Semitronix

OnMicro
昂瑞微

慧智微
SMARTER MICRO

广州开发区产业基金
GDD Industry Fund

